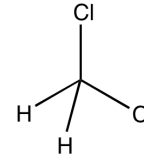


Identification

CH₂Cl₂
M = 84,93 g/mol
CAS [75-09-2]
EC number: 200-838-9
Taric code: 2903 12 00

**Synonyms**

Methylene chloride, Chloromethylene

Specifications

assay (G.C.)..... min. 99,8 %
colour (Hazen)..... max. 10
identity (IR-spectrum)..... passes test
residue on evaporation..... max. 3 ppm
water (K.F.) max . 0,05 %

GC/MSD (retention range n-undecane
to n-tetracontane, scanning area
30 - 600 amu, individual signals
(n-tetradecane standard))..... max. 3,0 ng/ml (ppb)

Suitable for residue analysis

Physical data

- Density: 1,32 g/cm³
- Solub. in water: (20 °C): 20 g/l
- Melting point: ~ -95 °C
- Boiling point: 40 °C
- Ignition temperature: 605 °C
- Vapour pressure: (20 °C) 475 hPa
- Viscosity: (20 °C) 0,43 mPas
- Dipolar moment: (20 °C) 1,6 Debye
- Dielectric const.: (20 °C) 9,1
- Evap. heat: (40 °C) 329 KJ/kg
- Saturation conc.: (20°C) 1549 g/m³
- Expl. limit (upper): 22 Vol%
- Expl. limit (lower): 13 Vol%
- pH(20 °C) 7

Safety - GHS

Signal Word: Warning

Hazard Statements:

- H315: Causes skin irritation.
H319: Causes serious eye irritation.
H335: May cause respiratory irritation.
H336: May cause drowsiness or dizziness.
H351: Suspected of causing cancer.
H373: May cause damage to organs through prolonged or repeated exposure.

**Precautionary Statements:**

- P281: Use personal protective equipment as required.
P201: Obtain special instructions before use.
P202: Do not handle until all safety precautions have been read and understood.
P308+P313: IF exposed or concerned: Get medical advice / attention.
P405: Store locked up.
P501a: Dispose of contents / container in accordance with local / regional / national / international regulations.

Toxicological data

- LD 50 (oral, rat): 1600 mg/kg
- MAK: 100 ml/m³, 350 mg/m³
- WGK: 2
- Poison class CH (Swiss): 4

Transport/storage

- ADR: 6.1 T1 III • UN 1593 • DICHLOROMETHANE
- IMDG: 6.1 III • UN 1593 • DICHLOROMETHANE
- IATA/ICAO: 6.1 III • UN 1593 • DICHLOROMETHANE
- PAX: 655
- CAO: 663
- Store between 15°C and 25°C