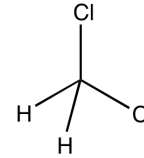


**Identification**

CH<sub>2</sub>Cl<sub>2</sub>  
M = 84,93 g/mol  
CAS [75-09-2]  
EC number: 200-838-9  
Taric code: 2903 12 00

**Synonyms**

Methylene chloride, Chloromethylene

**Applications**

solvents, analytical chemistry.

**Specifications**

assay (G.C.).....	min.99,8 %	Suitable for organohalogenated
identity (IR-spectrum).....	passes test	pesticide and dioxins, furans and PCBs
density (20°/4°).....	1,323 - 1,327	residue analysis
ethanol (G.C.).....	max. 0,2 %	ECD, from 1,2,4-trichlorobenzene to
residue on evaporation.....	max. 0,0001 %	decachlorobiphenyl, no peaks are
water (K.F.).....	max. 0,02 %	obtained greater than 3 pg/ml as lindane.
		No peaks are obtained in vicinity of
		2,4,5-trichlorobiphenyl.

**Physical data**

- Density: 1,32 g/cm<sup>3</sup>
- Solub. in water: (20 °C): 20 g/l
- Melting point: ~ -95 °C
- Boiling point: 40 °C
- Ignition temperature: 605 °C
- Vapour pressure: (20 °C) 475 hPa
- Viscosity: (20 °C) 0,43 mPas
- Dipolar moment: (20 °C) 1,6 Debye
- Dielectric const.: (20 °C) 9,1
- Evap. heat: (40 °C) 329 KJ/kg
- Saturation conc.: (20°C) 1549 g/m<sup>3</sup>
- Expl. limit (upper): 22 Vol%
- Expl. limit (lower): 13 Vol%
- pH(20 °C) 7

**Safety - GHS**

Signal Word: Warning

**Hazard Statements:**

- H315: Causes skin irritation.  
H319: Causes serious eye irritation.  
H335: May cause respiratory irritation.  
H336: May cause drowsiness or dizziness.  
H351: Suspected of causing cancer.  
H373: May cause damage to organs through prolonged or repeated exposure.

**Precautionary Statements:**

- P281: Use personal protective equipment as required.  
P201: Obtain special instructions before use.  
P202: Do not handle until all safety precautions have been read and understood.  
P308+P313: IF exposed or concerned: Get medical advice / attention.  
P405: Store locked up.  
P501a: Dispose of contents / container in accordance with local / regional / national / international regulations.

**Toxicological data**

- LD 50 (oral, rat): 1600 mg/kg
- MAK: 100 ml/m<sup>3</sup>, 350 mg/m<sup>3</sup>
- WGK: 2
- Poison class CH (Swiss): 4

**Transport/storage**

- ADR: 6.1 T1 III • UN 1593 • DICHLOROMETHANE
- IMDG: 6.1 III • UN 1593 • DICHLOROMETHANE
- IATA/ICAO: 6.1 III • UN 1593 • DICHLOROMETHANE
- PAX: 655
- CAO: 663
- Store between 15°C and 25°C